



Guidelines for placement and use of Smoke Alarms and Carbon Monoxide Alarms for single family dwellings, townhomes, duplexes and apartment buildings

Smoke Alarms

If your home has smoke alarms, check the date on the unit to determine how old it is. The NFPA recommends replacing your alarms every 10 years. All smoke alarms shall conform to the latest UL Standards. UL numbers are listed on the device and packaging.

Location

The State Building Code tells us that, smoke alarms shall be installed in each of the following locations:

- In each sleeping room; and
- Outside each separate sleeping area in the immediate vicinity of the bedrooms; and
- On each additional story of the dwelling, including basements but not including crawl spaces and uninhabitable attics. Install per manufacturers recommendations. See reverse side of handout for installation recommendations.

Power source

- Unfinished areas shall be hard wired and equipped with a battery backup.
- Finished areas may be solely battery operated.

Effective Dates: Single family and townhomes July 10, 2007. Apartment Buildings January 1, 2009.

Carbon Monoxide Alarms

Carbon monoxide alarms may be a combination type with a smoke alarm, or an outlet powered carbon monoxide alarm. All carbon monoxide alarms shall conform to the latest UL Standards. UL numbers are listed on the device and packaging. Install per manufacturers recommendations.

Location

- Within ten (10) feet of each room used for sleeping purposes.

Effective Dates:

- Effective January 1, 2007 all newly constructed single family homes and multifamily dwelling units.
- Effective August 1, 2008, all existing single family homes shall be equipped with an approved carbon monoxide alarm meeting U/L specifications.
- Effective August 1, 2009 all other multifamily or apartment dwelling units shall be provided with approved CO alarm.

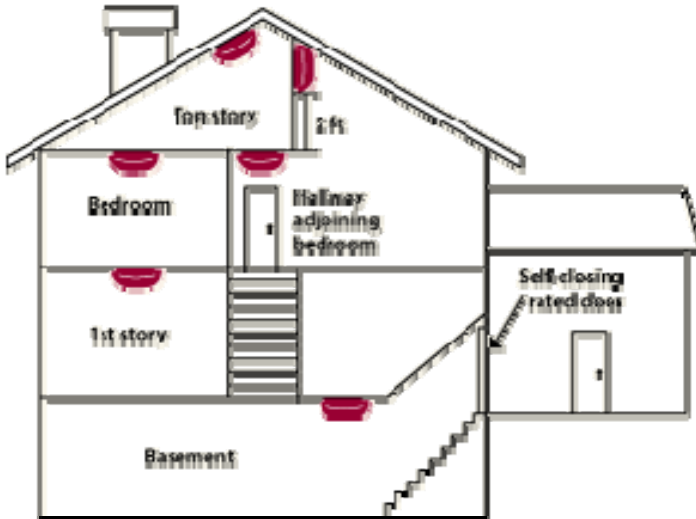
Exceptions:

Exceptions for Multifamily Dwellings with no in unit carbon monoxide producing equipment. (i.e. gas furnace, water heater etc.). Buildings with ONLY CENTRALIZED CARBON MONOXIDE PRODUCING EQUIPMENT may only be required to have approved Carbon Monoxide alarms installed between 15 and 25 feet of all carbon monoxide producing equipment. These detectors must be monitored by an approved alarm system.

Informational Websites

www.fire.state.mn.us and www.doli.state.mn.us

Guidelines for placement of smoke alarms



Single Family Dwelling, Townhouses and Duplexes

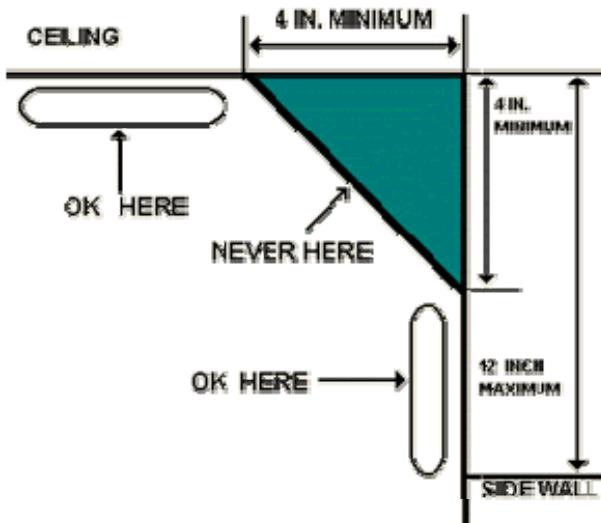


Figure of Smoke Detector location