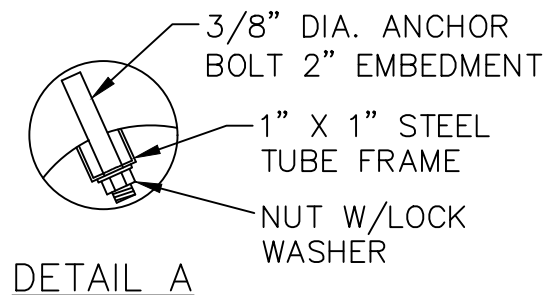
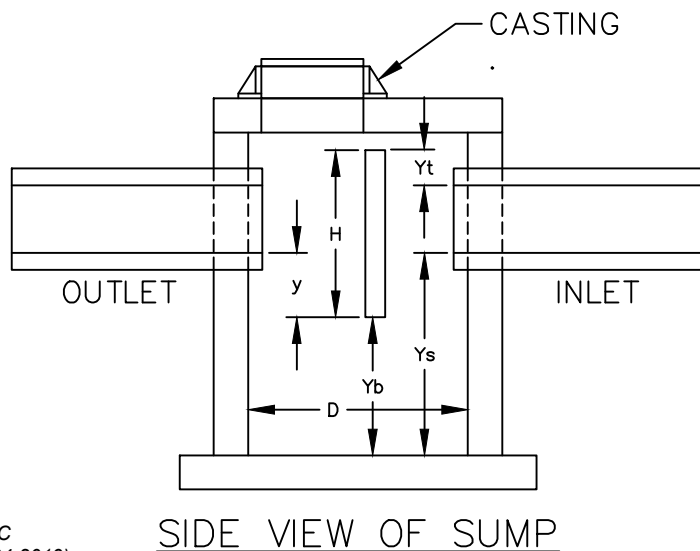
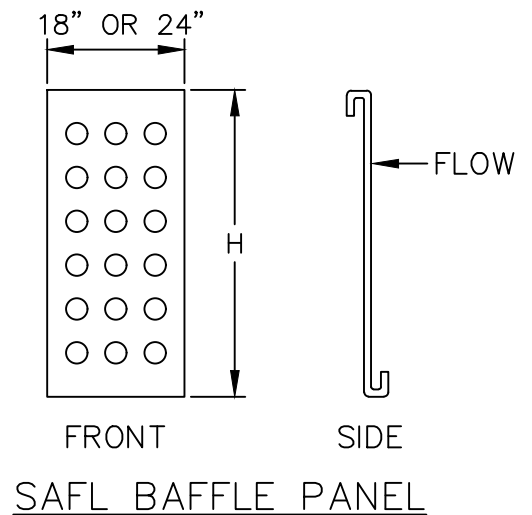
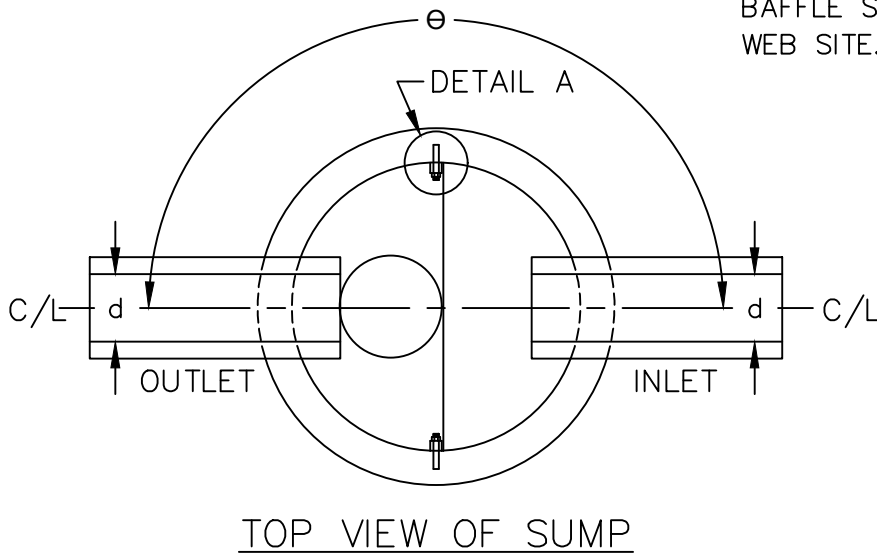


| d<br>(IN.) | H<br>(IN.) | $\theta$<br>(DEG.) |      | y<br>(IN.) | Ys         | Yb         | Yt       | D      |
|------------|------------|--------------------|------|------------|------------|------------|----------|--------|
|            |            | MIN.               | MAX. |            |            |            |          |        |
| 12         | 36         | 130                | 230  | 12         | MIN. 4 FT. | MIN. 3 FT. | 0" TO 6" | VARIES |
| 15         | 36         | 130                | 230  | 12         |            |            |          |        |
| 18         | 36         | 130                | 230  | 12         |            |            |          |        |
| 21         | 46         | 140                | 220  | 12         |            |            |          |        |
| 24         | 46         | 140                | 220  | 12         |            |            |          |        |
| 27         | 46         | 140                | 220  | 12         |            |            |          |        |
| 30         | 57         | 150                | 210  | 12         |            |            |          |        |
| 36         | 57         | 150                | 210  | 12         |            |            |          |        |

**NOTES:**

1. IDEAL BAFFLE HEIGHT = DISTANCE FROM TOP OF THE HIGHEST INLET PIPE TO THE BOTTOM OF THE OUTLET PIPE PLUS 18" OR GREATER.
2. MINIMUM ACCEPTABLE BAFFLE HEIGHT = DISTANCE FROM TOP OF THE HIGHEST INLET PIPE TO THE BOTTOM OF THE OUTLET PIPE PLUS 12".
3. HEIGHTS GREATER THAN 57" REQUIRE 2 BAFFLES STACKED.
4. CONTACT UPSTREAM TECHNOLOGIES FOR PIPES LARGER THAN 48" I.D.
5. FOR MORE INFORMATION SEE THE DESIGN GUIDE AT UPSTREAM TECHNOLOGIES WEB SITE.
6. VIEW THE COMPLETE LIST OF AVAILABLE BAFFLE SIZES AT UPSTREAM TECHNOLOGIES WEB SITE.



Rev C  
(07-24-2019)

# SAFL BAFFLE DETAIL UPSTREAM TECHNOLOGIES INC.

DRAWN: R.L.S.

DATE: 1/21/2020

SCALE: NONE

PLATE NO. STM-20